

BULLETIN

EASTERN SUBURBS ORCHID SOCIETY INC.

NEXT MEETING: 7.45pm Monday 15 April 2019 at Community Hall, on corner Arden and Varna Streets, Clovelly (held 3rd Monday of each month except January) **Visitors always welcome.**

President/Show Marshall

Chris Dalrymple
0408 602 658
thedalrymple@gmail.com

Vice President

Gavin Curtis
0416 019 079
gavininsydney@hotmail.com

Acting Secretary

Johanna Martin
0411 281 851
johanna.s.martin@gmail.com

Treasurer

Chin Wong
0434 910 535
wongc315@yahoo.com

Editor

Helen Mason
helenrobmason@gmail.com

Sales Manager

Warleiti Jap
warleiti@hotmail.com

ANNUAL MEMBERSHIP

Single \$15 Family \$20

(Due 1 July each year)

All correspondence and
membership enquiries to:

Johanna Martin

johanna.s.martin@gmail.com

Website: www.esos.org.au

March Meeting: Plant of the Night and Popular Choice



Gavin Curtis won Plant of the Night and Popular Choice with *Grammatophyllum scriptum citrinum* (above). These plants need plenty of fertiliser as they grow without soil, and roots will attach to the side of the pot. It is native to Borneo, the Philippines, Fiji and New Guinea. This species can grow very large plants that have dozens of emerald green flowers on long spikes. The fragrant flowers last about 6-8 weeks. Plants grow well with intermediate to warm temps, good medium to high light and plenty of water when in growing and flowering.

Vale: Sean Mullen

It is with great sadness that members are informed of the passing of one of our favourite long time members, Sean Mullen, following a brief period in an aged care facility. Sean had a great passion for growing beautiful orchids on the balcony of his small inner city apartment. He rarely missed meetings, even though he had to take two buses. He was a keen volunteer at Orchid Shows, cheerfully selling raffle and door entry tickets. Sean was kind and considerate, and volunteered in the community too.

MARCH MEETING REPORT

The President, Chris Dalrymple welcomed members and guests.

TREASURERS REPORT: The Treasurers report was tabled by Chin Wong and accepted.

MEDAL PRESENTATION: Chris presented Cathy Starrett with the Meretricious Award for her tireless voluntary support to the Society over many years.

VOLUNTEERS NEEDED:

Volunteers were called to support catering for monthly meetings and raffle ticket sales. Judith and Jim Linton, Margaret Staughton, Lorraine Fenton and Jenny Wills will participate in the kitchen roster. The Lintons will organise the catering for 15 April meeting. David Bullock agreed to organise the raffle every month.

PRESENTATION: "What Problem is That?"

Chris Dalrymple presented some very interesting slides of orchid plant damage, for a lively discussion and identification of the cause, and how to control it.

SOUTHERN ORCHID SPECTACULAR:

Members were notified that the move to a new larger venue at Sutherland Basketball Stadium, Waratah Park Old, Princes Hwy, Sutherland will require more members to volunteer on 11th-13th October. Chris outlined the number of people needed to assist with Door Entry and Raffle ticket sales, as well as the important task of pulling down the display. Many hands make light work.

Friday x3 for 9am-12.30pm x2 for 12.30pm-4pm
Sat x2 for 9am-12.30pm x2 for 12.30pm-4pm
Sun x2 for 9am-11.30am x2 for 11.30am-2pm
plus extra people for pull down 2-4pm on Sunday

OTHER BUSINESS:

1. Oryit was thanked for conducting the Novice Workshop. Next month's repotting Workshop will commence at 7.20pm, led by Herbert Chen.
2. A volunteer is needed to manage the bulk orders of bark, pots and fertiliser from Garden City Plastics.
3. Members celebrated Barry Collins 85th birthday with a cake presentation.
4. Warleiti Jap organised the large number of plants and seedlings on sale, using the new yellow tags.

CATERING:

Cathy Starrett and those providing delicious catering were warmly thanked.

**NEXT MEETING: AT 7.45PM, MONDAY 15 APRIL
NOVICE WORKSHOP 2 COMMENCES AT 7.20PM
RUN BY HERBERT CHEN**



ERRATUM

Sincere apologies to Herbert Chen for printing the incorrect photo for his orchid that won Popular Choice in the previous issue of this Bulletin (March 2019). It was, of course, the Brassidium Golden Gamine 'White Knight' as shown in the photo above. Many thanks to Jim Brydie for noticing.



Oryit Fotini (above) created a lot of interest when conducting the Novice Workshop for the Society's many new members. Many thanks Oryit.

Meritorious Award

Members joined Chris Dalrymple in congratulating Cathy Starrett when he presented her with the Meritorious Award. She contributed in many different ways, and all of them were essential to the ongoing success of the Society. We all appreciate her support at monthly meetings selling raffle tickets, organising the kitchen and helping out with catering. We also recognise her tireless work at Orchid Shows, creating whatever was needed, including pot covers and a backdrop for the Society display, as well as setting up and pulling down every year. To sum up, Cathy has been a quiet achiever who just gets on with the job required. Chris thanked her for her commitment and many years of service.



This *Miltonia* unknown (above) was grown by Mira Kostic

Herbert Chen grew the *Aliceara* 'Sweetheart Jonel Everglades' and *Phalaenopsis* unknown (below)

Other Orchids Benched



Maria Nagy grew the *Miltonia* 'Aztec Toni' (above).



Warleiti Jap grew this very pretty *Cymbidium dayanum* (left).



Barry Collins Birthday

On 15th March members celebrated Barry Collins 85th birthday. He has had an interesting life! From 1958 to 1972 Barry served as a Police Officer and Kings Cross was his patch. Barry attended Newington College, and rowed, played rugby and was a member of the First XI Cricket team. He went on to play 1st Grade Rugby for Randwick. His contribution to tennis earned Barry a Life Membership of the Wyvern Tennis Club (of which he is still President, and has been so since 1955) and a Life Membership of the Eastern Suburbs Tennis Association (15 years as a Board Member and social secretary).



In 1962 Barry discovered he had a green thumb and joined the NSW Orchid Society, where he was a Board member, President, and Show Marshall. He was also Royal Horticultural Society Board member and President, and a Royal Easter Show senior judge. He was also ESOS Secretary then President, and a foundation member of ANOS. Barry was granted Life Membership of ONSW, ESOS, ANOS and RAS.

Now for those who are counting, that's eight Life memberships. Is this a record?

Four years ago Barry was appointed as Board member of Coogee RSL and is currently the Welfare Officer. How



good is it that a man like Barry Collins is a Society member?! Lastly, no story about Barry would be complete without recognising his Order of Australia Medal (OAM) for his service to Horticulture and Sport.

ESOS members wish you a Happy 85th Birthday Barry, and many happy returns!

Fragrant Orchids...hmm...

Most people arrive at an Orchid Show and their breath is taken away by the intoxicating perfume in the hall! Fragrant orchids for sale usually attract a lot of interest. But beware - some are not so pleasant!

Here are some orchids with interesting scents to look out for:

Aeringis citrata	lemon scent
Bifrenaria harrisoniae	floral exotic
Brassavola nodosa	gardenia
Brassavola cucullata	laundry detergent
Bulbophyllum beccarii	rotting meat
Bulbophyllum careyanum	very ripe fruit
Bulbophyllum curtisii	chlorine
Bulbophyllum fletcheriana	rotting meat
Catasetum ciliatum	rye bread
Catasetum fimbriatum	spice
Catasetum macrocarpum	mint
Catasetum roseum	cinnamon
Cattleya amethystoglossa	spicy
Cattleya loddigesii	jasmine
Clowesia rosea	Vicks Vaporub
Coelia triptera	Lily of the Valley
Coelogyne cristata	spice
Coelogyne densiflora	musk
Coelogyne fimbriata	musk
Coelogyne flaccida	musk
Coelogyne mossiae	floral
Coelogyne Unchained Melody	floral
Cymbidium atropurpureum	coconut oil
Cymbidium tracyanum	peach
Dendrobium aemulum	strong
Dendrobium aggregatum	honey
Dendrobium amabile	orange blossom
Dendrobium delicatum	spicy
Dendrobium falcorostrum	orange blossom
Dendrobium speciosum	floral (hayfever)
Dendrobium striolatum	honey
Encyclia cordigera	rose
Encyclia lancifolia	vanilla
Encyclia plicate	chocolate
Epidendrum ilense	pumpkin
Laelia purpurata	liquorice/spicy
Lycaste aromatica	spicy
Lycaste brevispatha	apples
Miltonia flavescens	grassy
Miltoniopsis santanaei	rose
Odontoglossum edwardi	violets
Oncidium cheirophorum	lemon
Oncidium enderianum	lilacs
Oncidium maculatum	mushrooms
Oncidium Sharry Baby	vanilla or chocolate
Oncidium Twinkle	spicy vanilla
Paphiopedilum delenatii	raspberry
Paphiopedilum malipoense	raspberry
Rhyncholaelia digbyana	citrus
Sarcochilus falcatus	orange blossom
Stanhopea nigroviolacea/tigrina	pungent
Thunia marshalliana	oranges
Vanda insignis/lamellata	floral
Zygopetalum crinitum	carnation
Zygopetalum maculatum	floral

Presentation: "What Problem is That?"

President, Chris Dalrymple presented some excellent slides of orchid plant damage for a lively discussion and identification of the cause, and and how to control it.



1. APHIDS

- Wipe them off using finger or toothbrush (be sure to rinse wife's toothbrush before replacing it)
- Control - spray oil (Eco, Neem, white oil)
- Avoid sunlight when sprayed
- Control: Insecticide - either contact (Malathion) or systemic (Confidor)
- Respray after 7-10 days for any later egg hatching
- Be aware of toxicity rating of the chemical you use (wear protective clothing)



2. BORERS



- Will eat bark/mount then roots & pseudobulbs
- Very difficult to eradicate
- High pressure hose onto burrows, wash away frass, and radical dissection if necessary
- Spray on a pressurized surface spray
- Consider remounting, total repot



3. FUNGAL DAMAGE, WATER ON LEAF

- May progress to bacterial rot
- Control - try a fungicide
- Remove the effected part of the leaf
- Correct the environment, better air flow



4. SUNBURN

- Know where the sun shines onto your orchid collection
- Be careful when summer temperatures are above average
- Add more shade if problem continues
- Keep water off leaves and do not spray plants when expecting over 35C

5. FUNGAL ROT

- Control – Antirot fungicide, cinnamon
- Trim effected parts – but success rate is low
- If early you may get regrowth from the plant base
- Anaerobic fungus so expose to air



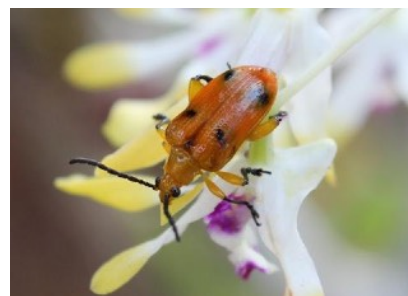
6. CHEWING DAMAGE (SNAIL, SLUG, CATERPILLAR)

- It is probably living in the mix, so tip out the plant
- Control – snail pellets (Multiguard is environmental)
- Control – insecticide, contact or systemic
Note basal regrowth



7. DENDROBIUM BEETLE

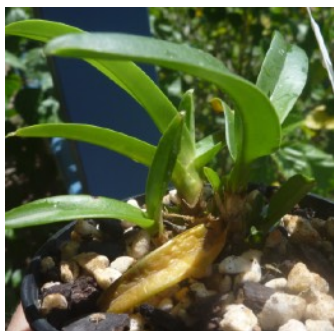
- Insecticide – Carbaryl
- Use fly spray with hand/bucket underneath to catch beetles that immediately drop off
- Sacrifice/Indicator plant – they seem to be attracted to the red/orange flowers of Epi. radicans. I had a big clump growing outside the orchid house and I killed beetles seen.





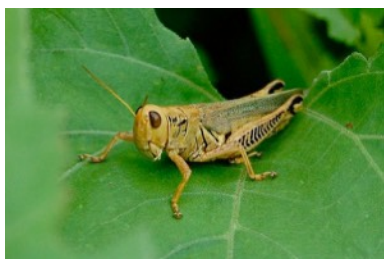
8. RED SPIDER MITE & THRIPS

- Mites live under the leaf and Thrips live on the upper surface
- Control – miticide (remember safety procedures) and oil
- Respray after 7-14 days



9. OLD LEAVES

- Natural leaf dieback
- Pull off old leaves when start to separate to prevent bacterial rot, scale, or mealy bug infestation



10. HOPPERS

- Grasshoppers and katydids
- Generally do not do much damage
- Use insecticide if become a problem



11. TREE CRICKETS

- Eat like locusts, across new leaf growth or flower stem
- When it falls over, cricket moves on to the next one
- Control – Find at night, then blind with fly spray, grab/ knock to ground, then grind under heel (very satisfying)



12. BROWN ANTECHINUS

- Very small marsupial (omnivore rodent) that chews leaves
- Very cute, and very fast when it runs and jumps
- Usually females (as shown on stove at left)
- Control – keep orchids in a sealed area

MONTHLY RESULTS: OPEN

No.	Class	Plant	Exhibitor
5	Laeliinae Cluster/Novelty	1 <i>Epi.</i> Topaz Rose Rosie	G Curtis
6	Laeliinae Intermediate/Minature	1 <i>Catt.</i> Siamese Do 'Kiwi'fruit' 2 <i>Slc</i> Angel Flare 'Janette' x <i>Pot.</i> Rosella Tokyo 3 <i>Catt.</i> Chocolate Drop 'Clifton Yellow'	W Jap H Chen G Curtis
10	Dendrobium Hybrids	1 <i>Den.</i> 'Hibiki' 2 <i>Den.</i> Soft Mirage	W Jap H Chen
11	First Flowered Seedling	1 <i>Vanda</i> Tricolour 2 <i>Den.</i> unknown	G Curtis G Curtis
13	Oncidiinae Hybrids	1 <i>Gombrassiltonia</i> 'Sweetheart Jonel Everglade' 2 <i>Brassidium</i> Golden Gamine "White Knight" 3 <i>Oncidium</i> unknown	H Chen H Chen G Curtis
17	Phalaenopsis Hybrids	1 <i>Phal.</i> Unknown 2 <i>Phal.</i> Unknown 3 <i>Phal.</i> Unknown	H Chen G Curtis H Chen
18	Vandaceous Hybrids (Excluding Phals)	1 <i>Vanda</i> Unknown 2 <i>Ascda</i> Roslyn's Best Brighton	G Curtis G Curtis
21	Species: Asia	1 <i>Grammotophyllum scriptum citrinum</i> 2 <i>Cymbidium dayanum</i> 3 <i>Dendrochilum uncumtum</i>	G Curtis W Jap W Jap
22	Species: The Americas	1 <i>Guiranthé bowringiana</i> 2 <i>Guiranthé bowringiana</i> 3 <i>Guiranthé bowringiana</i>	G Curtis G Curtis G Curtis

MONTHLY RESULTS: NOVICE

No.	Class	Plant	Exhibitor
25	Laeliinae: Hybrids	1 <i>Procatavola</i> Golden Peacock 2 <i>Enc.</i> Fausta	O Fotini O Fotini
30	Oncidiinae: Species/Hybrids	1 <i>Miltonia</i> Aztec 'Toni' 2 Beallara Big Shot 'HiLo Sparkle' 3 <i>Miltonia</i> unknown	M Nagy H Mason M Kostic
31	Paphiopedilum Species and Hybrids	1 <i>Paph. maudiae</i>	J Linton

The views stated in this bulletin are not necessarily the views of The Eastern Suburbs Orchid Society Inc. but are the views expressed by the individual authors and contributors. The Eastern Suburbs Orchid Society Inc. authors & contributors to this bulletin disclaim all liability for damage or losses which may be contributed to the use, misuse or non-use of any information or material published in this bulletin.