

BULLETIN

EASTERN SUBURBS ORCHID SOCIETY INC.

NEXT MEETING: 7.45pm Monday 15 July 2019 at Community Hall, on corner Arden and Varna Streets, Clovelly *(held 3rd Monday of each month except January)* **Visitors always welcome.**

President/Show Marshall

Chris Dalrymple
0408 602 658
thedalrymple@gmail.com

Vice President

Gavin Curtis
0416 019 079
gavininsydney@hotmail.com

Acting Secretary

Johanna Martin
0411 281 851
johanna.s.martin@gmail.com

Treasurer

Chin Wong
0434 910 535
wongc315@yahoo.com

Editor

Helen Mason
helenrobmason@gmail.com

Sales Manager

Warleiti Jap
warleiti@hotmail.com

ANNUAL MEMBERSHIP

Single \$15 Family \$20

(Due 1 July each year)

All correspondence and membership enquiries to:

Johanna Martin

johanna.s.martin@gmail.com

Website: www.esos.org.au

June Meeting: Plant of the Night and Members Choice



Gavin Curtis won Plant of the Night and Members Choice with this magnificent (renamed) *Vanda Rathbone* (above) which he obtained from Rosella, and which he grows in large bark, stones and terracotta.

JUNE MEETING REPORT

The President, Chris Dalrymple warmly welcomed members and guests.

TREASURERS REPORT

The Treasurers Report was tabled by Chin Wong and accepted. Members were reminded to pay their membership fees due on 1 July. OSNSW affiliate subscription to be paid. Hall hire to be paid in July.

ESOS AGM

Members were informed that the AGM on 19 August will require nominations for all vacant Committee positions, and were reminded that they have to be financial in order to vote or to nominate for a position. Johanna to email a Notice of Meeting before 15th July to all members and call for nominations.

CORRESPONDENCE

Tinonee Open Day 13-14th July, near Taree.

PRESENTATION

Irene Chalmers presented a slide show of Ira Butler 2019 Entries and Winners. She urged anyone winning a Show award to take a photo of the plant and enter the OSNSW Photographic Competition. There are three divisions of the competition with **\$300** prize money for each of Hybrid Orchid of the Year, Species Orchid of the Year, and Best Hybrid or Species Orchid of the Year exhibited by a Novice/Junior Grower. There will also be a prize of **\$100** for the Society involved in the show.

ESOS SHOW

Chris urged everyone to volunteer as well as to contribute plants for the ESOS Show to be held at Flower Power Garden Centre 84A Wentworth Ave Mascot on 27-28 July. Members were reminded to start preparing plants now, and that display setup would be at 2pm Friday 26 July. Eight member plants would be needed for repotting demos. Helen and Gavin to contact the Flower Power Manager to discuss the ESOS Show. The Show Roster was circulated for completion by members.

OTHER BUSINESS:

Photography Competition: Helen's proposal was accepted for a competition for the best orchid photos uploaded on the ESOS.org.au blog site, with prizes to be awarded at the ESOS Xmas Party.

CATERING: Those providing the catering service and the delicious supper were warmly thanked.

NOVICE WORKSHOP 3 COMMENCES AT 7.15PM

1. Gavin Curtis will talk about orchid potting options.
2. Herbert Chen will demonstrate uploading photos to the blog site, to enter the new Photo Competition. So please bring your laptop with a 'test photo'.

NEXT MEETING: AT 7.45PM ON MONDAY 15 JULY

ORCHID PHOTOGRAPHY PRIZE

There will be a prize for the best orchid photo uploaded to the Members Blog on the ESOS.org.au website. If you are not sure how to do this, please ask Herbert Chen at the July meeting



Novice Workshop. This competition is open to financial ESOS members only, and orchid photos must be of plants owned for at least six months. Entries close at 5pm on 13 December 2019. Winners (First, Second, Third prizes) to be announced at the ESOS Christmas meeting.

NOTICE OF ANNUAL GENERAL MEETING 19 August 2019

Notice is hereby given of the Annual General Meeting of the Eastern Suburbs Orchid Society Inc. to be held at the Community Hall, cnr of Arden & Varna St, Clovelly at 7.45pm on Monday 19 August 2019. All positions will be declared vacant. Nominations are called for the following positions, to be sent to the Acting Secretary (Johanna Martin, email johanna.s.martin@gmail.com):

President

Vice President

Secretary

Treasurer

Editor

Plant Sales Manager

Committee

A BIG THANK YOU TO GAVIN!

A very big thank you to Vice-President Gavin Curtis for organising fifty very comfortable chairs for the Community Hall where members meet every month. Your generous initiative is appreciated by all.

The views stated in this bulletin are not necessarily the views of The Eastern Suburbs Orchid Society Inc. but are the views expressed by the individual authors and contributors. The Eastern Suburbs Orchid Society Inc. authors & contributors to this bulletin disclaim all liability for damage or losses which may be contributed to the use, misuse or non-use of any information or material published in this bulletin.

Other Orchids Benched

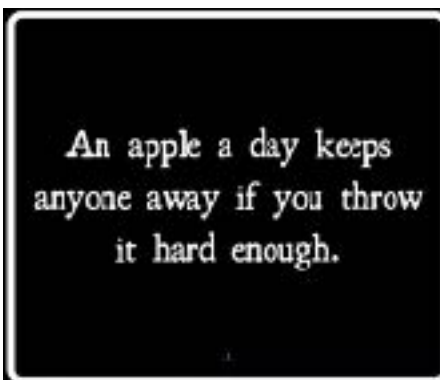


This colourful *Oncostele* Pacific Perspective "Pacific Heat" was grown very capably by novice Ping Li. (Note: renamed from *Willsonara*)



Cathy Starrett grew this *Cattlianthe* Norman Porter (renamed from SC. Hazel Boyd "Frae" x LC. Gradskes Gold "Coburg") with five large flowers on two racemes.

Novice Oryit Fotini grew this *Aliceara* Peggy Ruth Carpenter "Morning Glory" (below).



RLC. Dream Trader (above) was grown by Warleiti Jap.

Why are Orchid Flowers so Diverse?

While we admire the incredible diversity of orchids and enjoy their stunning flowers, it is important to remember that the sole purpose of every orchid flower is to attract pollinating insects such as bees, wasps, flies, and moths.

In order to be successful, orchids have evolved some incredible and even bizarre reproductive strategies which are quite unique. Orchid flowers have developed some intricate design features to ensure cross-pollination and prevent inbreeding. The outcome has been improved vigour and variety within the species. The abundant insects present in the Tropics where orchids originate are not interested in pollination, but are searching for nectar or pollen on which to feed. Orchids have evolved some pretty fancy scents, colours, shapes and markings to attract quite specific pollinators and so avoid self-pollination. Here are some examples.

Flowers that Mate with Males

Some Australian *Cryptostylus* sp. flowers resemble small female gnats or wasps, to lure male insects onto the flower. The pollen covered male insect then flies elsewhere, and cross-pollination is assured. The fascinating *Ophrys apifera* orchid flower (right) has an uncanny likeness to a female bee, and so proves irresistible to the male.



On the Gargano Peninsula in Italy you will find *Ophrys apifera* in many varieties and forms. The orchid flower emits a volatile substance (pheromone) which sexually attracts the males of some *Hymenoptera* insect species. In a vain attempt to mate with flowers which are mistaken for a female insect, pollination occurs. It would be interesting to see if modern hybrids have the same effect on pollinators.

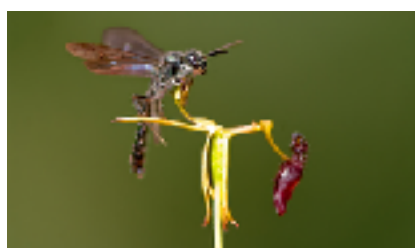


Flowers that Pong for Pollination

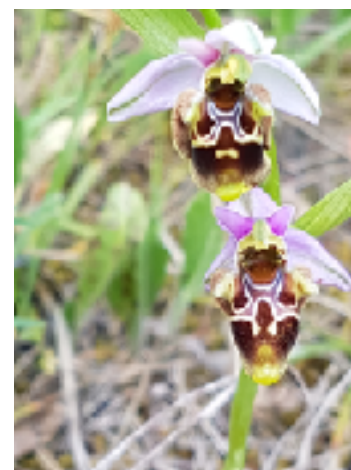
If you like the cloying scent of many *Stanhopea* sp. orchids, you will understand what attracts Central and South American orchid bees. A distinctive group of metallic green bees navigate the twisted flower petals (left) to collect the scent, which is used to mark their territory and to use in mating displays. Be aware that there are also many foul smelling orchids such as *Bulbophyllum fletcherianum*. These smell of rotten meat to attract carrion flies for pollination.

Unique Unisex Pollination

Catasetum sp. (right) are one of the most highly evolved orchids, which certainly impressed Charles Darwin. Male and female flowers are borne on different plants. When an insect is attracted by fragrance, it lands on the male flower which stores its pollen on a spring-loaded sticky disc at the back. The pollen is hurled towards the insect with considerable force, which may eject the insect, now covered in pollen, up to a metre away. Australia's hammer orchids also use a trigger mechanism. *Drakaea elastica* (left) has flowers that look and smell like female thynnine wasps. When male wasps attempt to mate with the dark purple hinged part of the flower, it "hammers" upwards and momentarily pins the wasp against the pollen structure.



The only known flower that pollinates itself is the Chinese orchid from Yunnan Province, *Holcoglossum amesianum* (lower right). The pollen-laden male part can twist 360 degrees and insert itself into the cavity of the female stigma.



MONTHLY RESULTS: OPEN

No.	Class	Plant	Exhibitor
4	Laeliinae Standard/Exhibition	1 <i>Rlc.</i> Dream Trader 2 <i>Rlc.</i> Malwarth	W Jap W Jap
5	Laeliinae Cluster/Novelty	1 <i>C.</i> Yellow Bird 2 <i>C.</i> Lius Toyance	W Jap W Jap
6	Laeliinae Intermediate/Minature	1 <i>Laelia interceps</i>	H Chen
7	Cymbidium Standard	1 <i>Cym.</i> Sulphur Creek	W Jap
9	Cymbidium Miniature	1 <i>Cym. erythraeum</i> x <i>Cym pumullium</i>	W Jap
11	First Flowered Seedling	1 <i>Miltonia bluntii</i>	H Chen
13	Oncidiinae Hybrids	1 <i>Oncidium</i> Twinkle 2 <i>Oncidium</i> unknown 3 <i>Oncidium</i> Twinkle	W Jap G Curtis W Jap
14	Cypripedioidae Species (Paphiopedilum & Phragmipedium)	1 <i>Paph. insigne</i> 2 <i>Paph. insigne</i> 3 <i>Paph. insigne</i>	D Bullock H Chen W Jap
17	Phalaenopsis Hybrids	1 <i>Phal.</i> Unknown	G Curtis
18	Vandaceous Hybrids	1 <i>Vanda</i> Rathbone (renamed <i>V. Gordon Dillon</i> x <i>Sunray</i>)	G Curtis
20	Pleurothallidinae Species & Hybrids	1 <i>Masdevilla</i> unknown	H Chen

MONTHLY RESULTS: NOVICE

No.	Class	Plant	Exhibitor
25	Laeliinae Hybrids	1 <i>Cattlianthe</i> Norman Porter (renamed) 2 <i>C.</i> intermedia x <i>C.</i> Morning Glory 3 <i>LC.</i> Tokyo Magic 'Lea' x <i>L. anceps</i> 'Castle Creek'	C Starrett H Mason N Weatherby
26	Cymbidium Species & Hybrids	1 <i>Cymbidium</i> unknown 2 <i>Cymbidium</i> unknown 3 <i>Cymbidium</i> unknown	J Wills C Starrett N Weatherby
29	Miscellaneous Hybrids	1 <i>Zygo</i> Tombstone Arthur Elle	O Fotini
30	Oncidiinae: Species/Hybrids	1 <i>Oncostele</i> Pacific Perspective 'Pacific Heart' 2 <i>Oncostele</i> Succubus Night Shift 3 <i>Onc.</i> Heavens Delight 'Sweet Fanfare'	Ping Li H Mason N Weatherby
31	Paphiopedilum Species & Hybrids	1 <i>Paph. insigne</i> 2 <i>Paph.</i> unknown	N Weatherby C Starrett
33	Species, Other	1 <i>Zygopetalum</i> unknown	N Weatherby

Eastern Suburbs Orchid Society Show

Flower Power Garden Centre

84A Wentworth Ave Mascot

Saturday 27th and Sunday 28th July

9am-4pm Saturday 9am-3pm Sunday

Free entry Cafe facilities open all day



Orchid Display | Plants for Sale |
Free growing advice | Free Parking
DON'T MISS THIS GREAT SHOW!

